

PART OF THE S.E. 1/4, OF SEC. 17, T.6N., R.1W., S.L.B. & M.

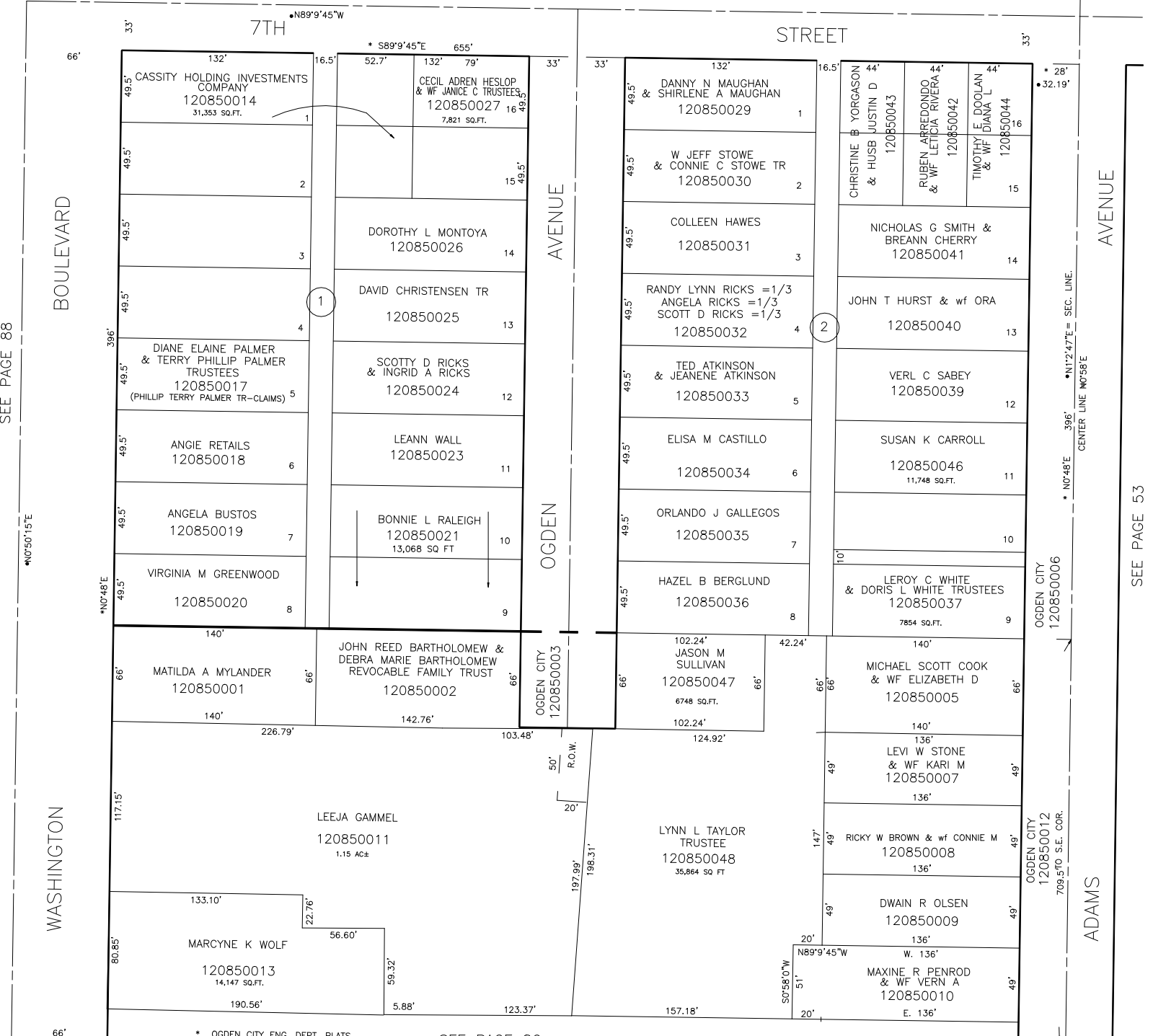
# MYERS' ADDITION

IN OGDEN CITY

SCALE 1" = 50'

TAXING UNIT: 25

SEE PAGE 79



SEE PAGE 88

SEE PAGE 53

\* OGDEN CITY ENG. DEPT. PLATS.  
 . ORIG DEDICATION PLAT

SEE PAGE 86